



NOTICE:
For use with Jockey Pro LT only.
V-Tracker LT does not work with any other
radio automation software.

Version: 1.0

8/05/02

11 Software

310 Arbutus Ave.

Manistique, Michigan 49854

Sales: (906) 341-7588

FAX: (906) 341-7581

COPYRIGHTS:

Copyright 2002 11 Software. All Rights Reserved.

The V-Tracker LT software is Copyright 2002 11 Software. All rights reserved. This software may not, in whole or in any part, be copied, reproduced, transmitted, translated (into any language, natural or computer), stored in a retrieval system, reduced to any electronic medium or machine readable format, or by any other form or means without prior consent, in writing, from 11 Software.

You are granted a limited license to use this software. The software may be used or copied only in accordance with the terms of that license, which is described in the following paragraphs.

TRADEMARKS:

V-Tracker LT, the V-Tracker LT "stylized logo" design, Jockey Pro LT, the Jockey Pro LT "stylized logo" design, 11 Software, and the 11 Software "MicMan" Logo are registered trademarks of 11 Software.

LICENSE:

"THE SOFTWARE" SHALL BE TAKEN TO MEAN THE SOFTWARE CONTAINED IN THIS PACKAGE AND ANY SUBSEQUENT VERSIONS OR UPGRADES RECEIVED AS A RESULT OF HAVING PURCHASED THIS PACKAGE. "BUYER" SHALL BE TAKEN AS THE ORIGINAL PURCHASER OF THE SOFTWARE.

BUYER HAS THE NONEXCLUSIVE RIGHT TO USE THE SOFTWARE ONLY ON A SINGLE COMPUTER. BUYER MAY NOT ELECTRONICALLY TRANSFER THE PROGRAM FROM ONE COMPUTER TO ANOTHER OVER ANY TYPE OF NETWORK. BUYER MAY NOT DISTRIBUTE COPIES OF THE SOFTWARE OR THE ACCOMPANYING DOCUMENTATION TO OTHERS EITHER FOR A FEE OR WITHOUT CHARGE. BUYER MAY NOT MODIFY OR TRANSLATE THE PROGRAM OR DOCUMENTATION. USER MAY NOT DISASSEMBLE THE PROGRAM OR ALLOW IT TO BE DISASSEMBLED INTO ITS CONTITUENT SOURCE CODE. BUYER'S USE OF THE SOFTWARE INDICATES HIS/HER ACCEPTANCE OF THESE TERMS AND CONDITIONS. IF BUYER DOES NOT AGREE TO THESE CONDITIONS, RETURN THE DISTRIBUTION MEDIA, DOCUMENTATION, AND ASSOCIATED MATERIALS TO THE VENDOR FROM WHOM THE SOFTWARE WAS PURCHASED, AND ERASE THE SOFTWARE FROM ANY AND ALL STORAGE DEVICES UPON WHICH IT MAY HAVE BEEN INSTALLED.

THIS LICENSE AGREEMENT SHALL BE GOVERNED BY THE LAWS OF THE UNITED STATES OF AMERICA, STATE OF MICHIGAN AND SHALL INURE TO THE BENEFIT OF 11 SOFTWARE OR ITS ASSIGNS.

DISCLAIMER / LIMITATION OF LIABILITY:

BUYER ACKNOWLEDGES THAT THE SOFTWARE MAY NOT BE FREE FROM DEFECTS AND MAY NOT SATISFY ALL OF BUYER'S NEEDS. 11 SOFTWARE WARRANTS ALL MEDIA ON WHICH THE SOFTWARE IS DISTRIBUTED FOR 60 DAYS TO BE FREE FROM DEFECTS IN MATERIALS AND WORKMANSHIP UNDER NORMAL USE. THE SOFTWARE AND ANY ACCOMPANYING WRITTEN MATERIALS ARE LICENSED "AS IS". BUYER'S EXCLUSIVE REMEDY DURING THE WARRANTY PERIOD SHALL CONSIST OF REPLACEMENT OF DISTRIBUTION MEDIA IF DETERMINED TO BE FAULTY. IN NO EVENT WILL 11 SOFTWARE BE LIABLE FOR DIRECT, INDIRECT, INCIDENTAL OR CONSEQUENTIAL DAMAGE OR DAMAGES RESULTING FROM LOSS OF USE, OR LOSS OF ANTICIPATED PROFITS RESULTING FROM ANY DEFECT IN THE PROGRAM, EVEN IF IT HAS BEEN ADVISED OF THE POSSIBILITY OF SUCH DAMAGE. SOME LAWS DO NOT ALLOW THE EXCLUSION OR LIMITATION OF IMPLIED WARRANTIES OR LIABILITIES FOR INCIDENTAL OR CONSEQUENTIAL DAMAGES, SO THE ABOVE LIMITATIONS OR EXCLUSION MAY NOT APPLY.

SPECIFIC RESTRICTIONS:

IN ACCORDANCE WITH THE COMPUTER SOFTWARE RENTAL ACT OF 1990, THIS SOFTWARE MAY NOT BE RENTED, LENT OR LEASED.

THE SOFTWARE AND ACCOMPANYING DOCUMENTATION MAY NOT BE PROVIDED BY A "BACKUP SERVICE" OR ANY OTHER VENDOR WHICH DOES NOT PROVIDE AN ORIGINAL PACKAGE AS COMPOSED BY 11 SOFTWARE, INCLUDING BUT NOT LIMITED TO ALL ORIGINAL DISTRIBUTION MEDIA, DOCUMENTATION, REGISTRATION CARDS, AND INSERTIONS.

Technical Support:

Phone: (906) 341-7588

System Requirements:

Microsoft Windows 98se, XP, 2000 and 2000 Pro.

128 Megs of RAM (minimum).

(We recommend 256 Megs or better)

A mouse or similar pointing device.

700 MHz Pentium III (minimum) or better.

15 Megabytes of available hard drive space for program and associated files.

(Since you'll more than likely be storing your music on the same system, we recommend a second hard drive of 20 to 40 Gig.)

CD-ROM Drive for installation.

SVGA - 800 x 600 or higher resolution video card.

17" Color Monitor (minimum).

Any 100% Direct X Compliant Sound Card.

(32 bit Sound Blaster compatible sound cards. Older 8 and 16 bit cards **will not** work. AWE 32 and AWE 64 sound cards are not 100% Direct X Compliant. We recommend using at a minimum, Sound Blaster's Audio Live Card. The Sound Card must have the ability to record "What you hear" or "Post Mix" if you'll be using the same system for Internet Broadcasting. At the printing of this manual both Windows XP & 2000 drivers do let you utilize "What you hear" or "Post Mix" on your sound card)

A decent set of speakers and microphone for your sound card.

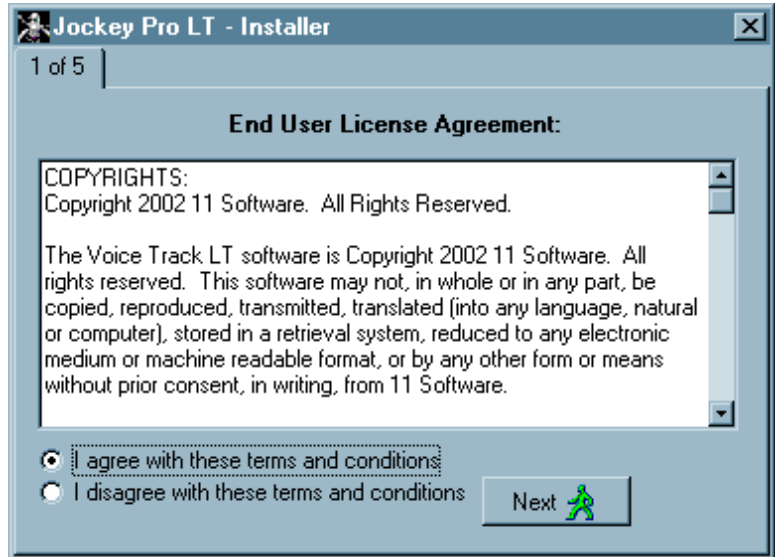
The most current version of Direct X from Microsoft.

Known Problems at this time:

INSTALLATION

Insert the V-Tracker LT CD into your CD drive. The CD should auto-boot to the installer screen. If this does not happen, then open the CD using Windows Explorer and double click on the Setup.exe file.

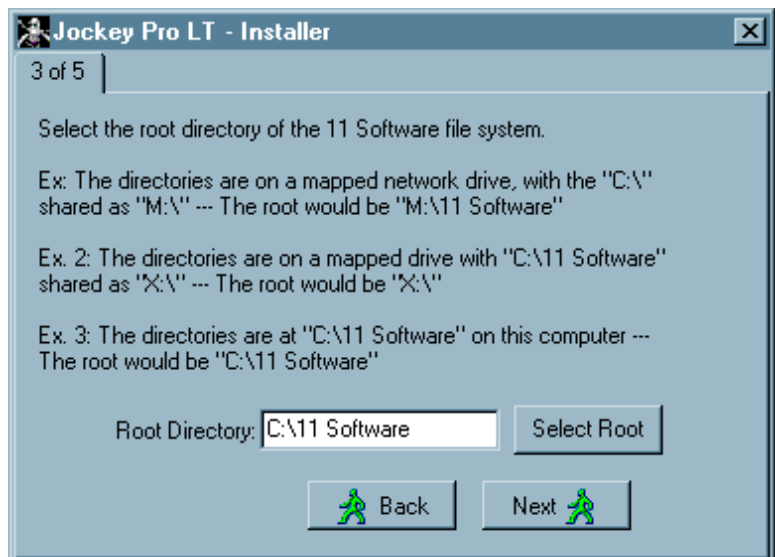
You should now see the first of five setup windows of the installer. This is the licensing agreement between yourself and 11 Software. After reading the agreement and if you agree with its terms, then click on "I agree with these terms and conditions" and press NEXT. If you do not agree with the terms, then click on the "I disagree with these terms and conditions", press NEXT and you will exit the software.



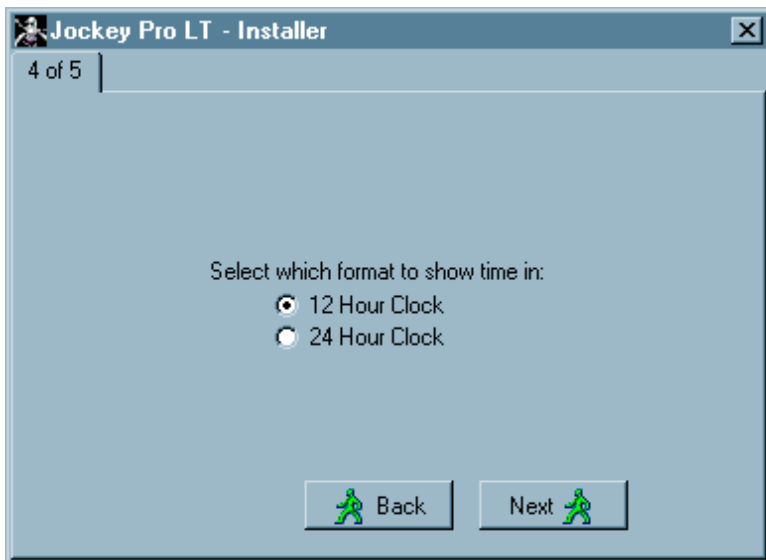
The next screen you will see asks if you would like an icon for V-Tracker LT placed on your Desktop. Check the option if you want it and then select NEXT to continue.



The third screen will prompt you as to where the 11 Software directory is located. This is the directory on your hard drive or out on the network where all your audio files are located. If you're not sure where this directory is located, please see your MIS person for help. Do not attempt to install the software if you do not know this information.

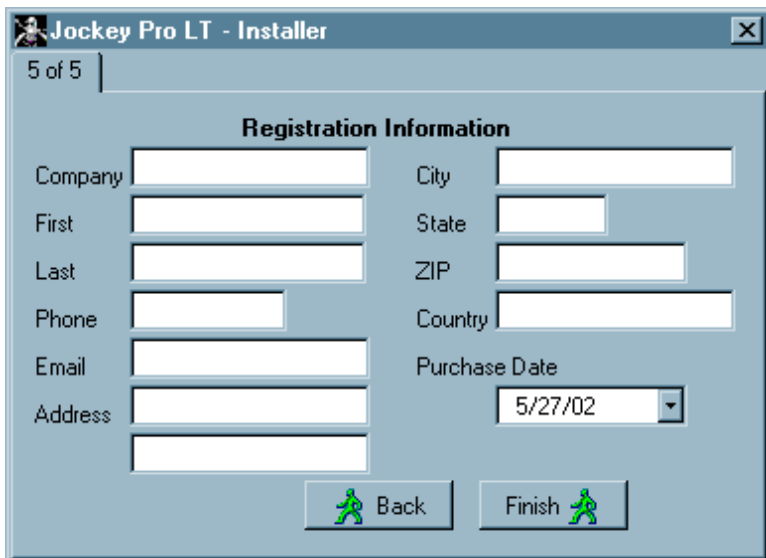


The next window you will see asks you if you would like to use a 12 or 24 hour clock. Select the one you need and then select NEXT to continue.



Finally V-Tracker LT needs to know all of your information for registration purposes. All fields must be filled out or you will not be allowed to continue.

V-Tracker LT now has enough information to install itself onto your computer. Select Finish to continue. The installer will start to install all necessary files for V-Tracker LT. If everything goes ok, you should see a window appear letting you know that the software was successfully installed.



OPERATION

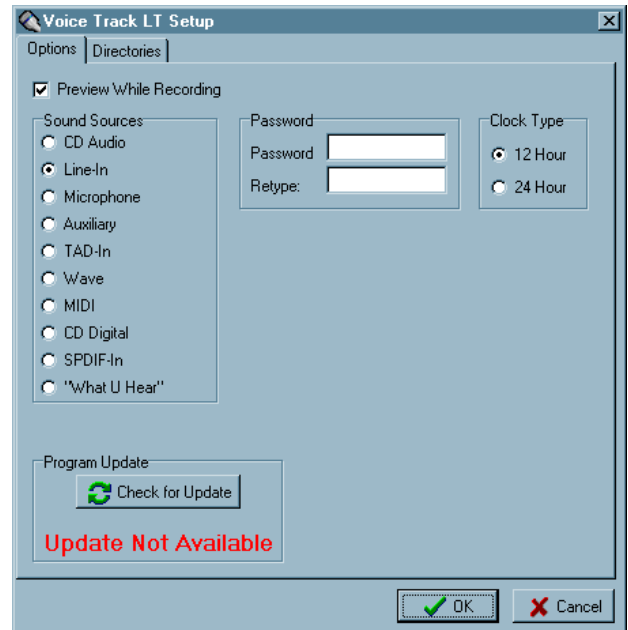
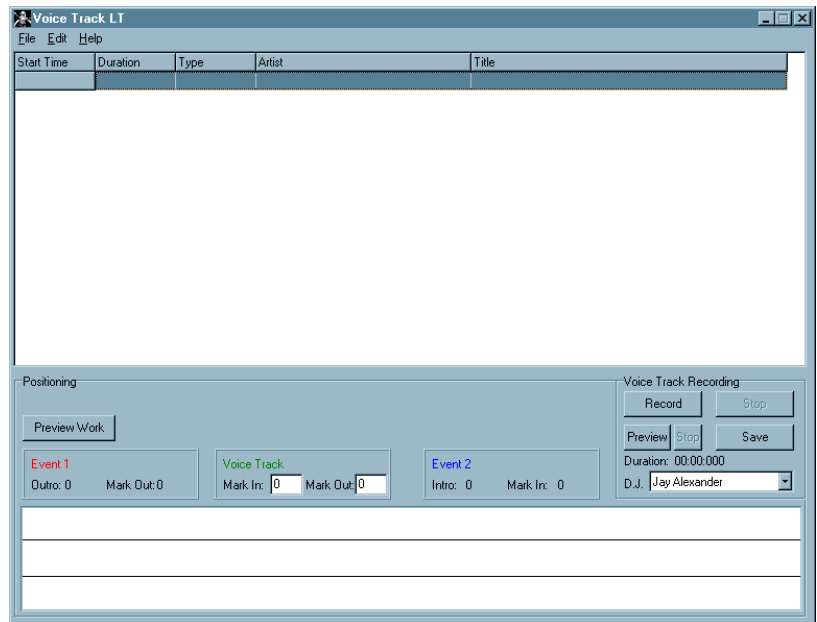
After the Installer has finished, you will find a new icon placed onto your desktop called V-Tracker LT (if you selected the option to add it). Double click on the icon to start using V-Tracker LT. You should see an interface like the one shown to the right.

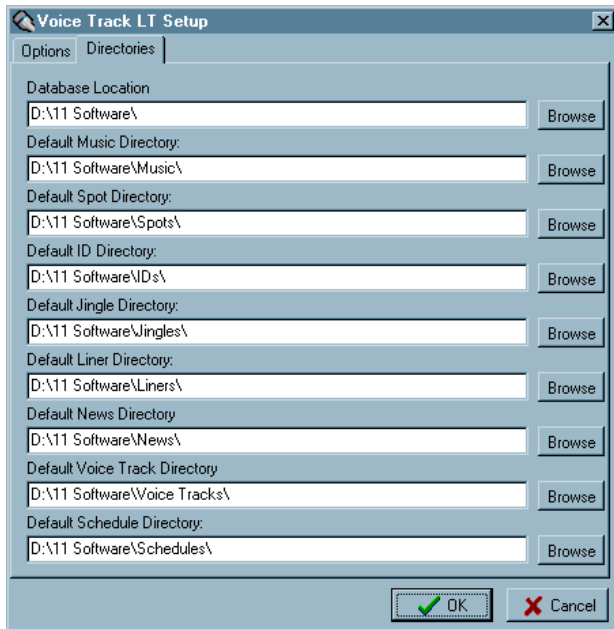
Now the first order of business you'll need to do is set up where your audio for voice tracking is going to be coming from.

Select Edit/Setup from the drop down menu and the screen to the left will appear. This screen lets you setup what input your voice tracks are coming from. If you have a microphone hooked up directly to the back of the computers sound card, then select Microphone. If you have an external mixer with a microphone connected to it and the mixer is connected to your Line In jack on your computer sound card, then select Line In. Basically, you have to know how the audio is getting to the computer before you can setup this option. If you don't know, then stop now and contact your stations engineer or MIS department to find out or have that person install the software for you.

If you want to preview what your recording as you're recording, then make sure you select Preview While Recording. This allows you to hear what you're saying as you're recording your voice tracks.

The Options tab lets you add a password to the Edit function so no one can change these settings once they are set. If you do create a password, please make sure it something you will remember. You also can edit whether you want a 12 or 24 hour clock as well as check for new updates of the software.



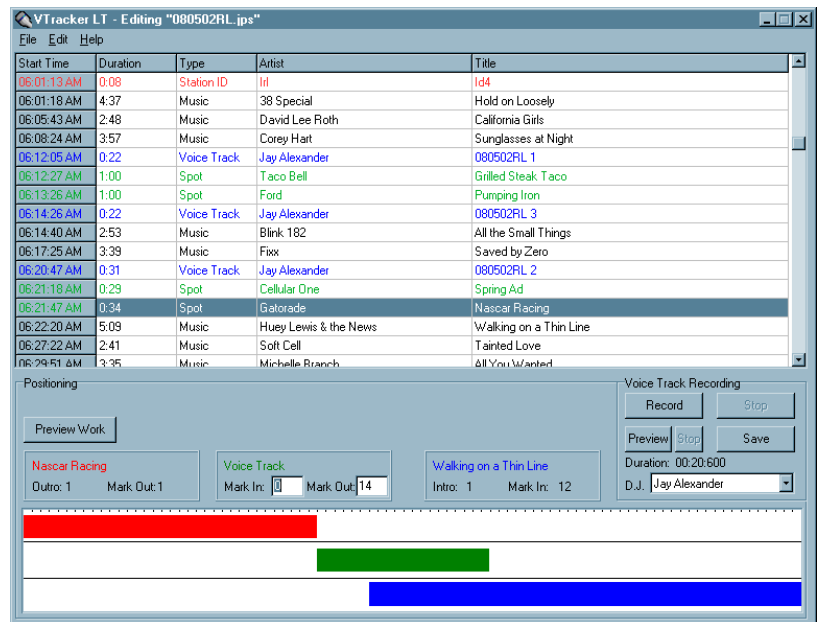


The Directories tab (shown to the left) gives the locations of all the directories V-Tracker LT needs to know about. These must be pointed to the same source directories that Jockey Pro LT uses in order for the software to work correctly. Once these are set, leave them alone!

V-Tracker LT is extremely easy to use, so there are no confusing icons or buttons on the interface. To get started simply click on "File" located on the drop down menu and select Load. If you entered the correct location of the 11 Software directory, you should now see a selection of different schedules to load for Voice Tracking. Remember, V-Tracker LT only works with Jockey Pro LT and no other radio station automation software. Also remember that you will need to create schedules using Scheduler LT before using V-Tracker LT. V-Tracker LT loads these schedules in and adds the voice track information into them and saves it back out for later playback using Jockey Pro LT.

Now that your schedule is loaded, you should see it appear in the Schedule Edit window like the example to the right. In our example you will notice that we have already added voice tracks to the schedule.

The voice tracks will appear in the color blue in the Schedule Edit window and as a green bar in the VT window at the bottom of the screen. The VT window also shows you in red what event you're coming out of and in blue what event you're going in to.



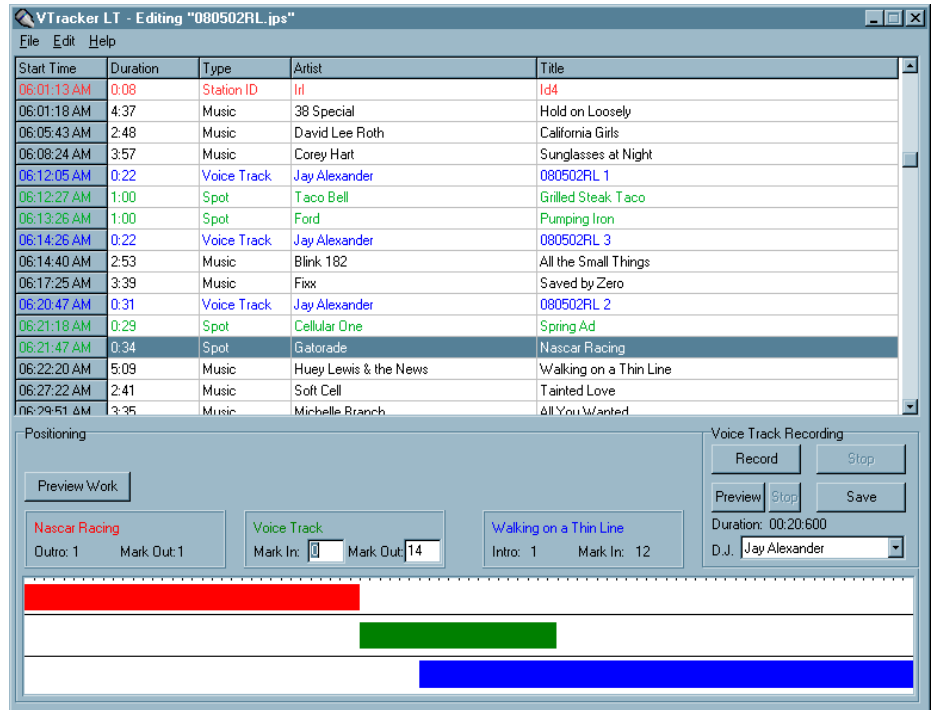
To add a voice track to your schedule simply left click once on any line above where you want the voice track to be added and then click Record. As you record the voice track you will see the green line expanding at the bottom of the screen. This is normal because it is showing you a representation of time. Once you are through recording, press the Stop button. At this point the green bar (your voice track) will automatically be placed on the time line with the two different playback events Mark Out and Mark In times. The red bar (the event you're coming out of) can not be moved in time. The green bar (your voice track) can be moved up and down the time line as can the blue bar (the event you're going in to). For now, press the Preview Work button located on the left side of the screen to hear both the red event's audio and your voice track. *NOTE: The Preview button located on the right side of the screen is for previewing just the voice over and nothing else. It is normally not used, but is provided if you need it.* If you don't hear the red event's audio, press Stop, move the green bar further towards the red bar and press the Preview Work button again. Repeat this process till you get the mix of both the red event and your voice track that you're looking for. Once you have that mixed, slide the blue bar all the way to the right of the green bar to start with and press Preview Work. As before, now slide the blue bar back towards the green bar till you get the right mix of both events. Once you have it set the way you like it, press the Save button and your voice track will be saved and will appear in the schedule edit window below the selected line in blue.

I know it may sound a bit confusing now, but in only a few short minutes, you'll be working with V-Tracker LT like you've worked with it for years. Most six hour shifts can be voice tracked in under an hour, it's just that easy.

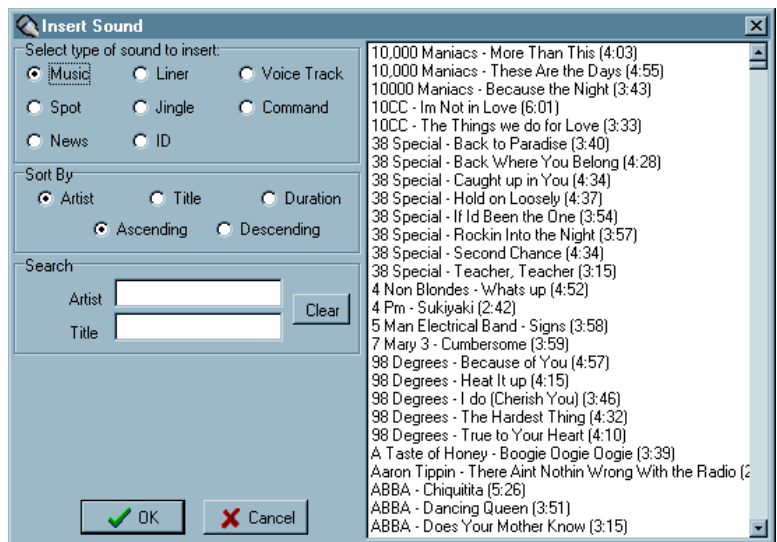
There are a few more features to let you know about, so lets get to them. If you'll look on V-Tracker LT's interface you'll see that you can select what DJ the voice tracks are for. This information is only available if you have DJ's setup for JockBox use in Jockey Pro LT.

Duration shows you in minutes/seconds just how long your voice track is.

Important note on the Save button. Once you press Save, V-Tracker LT saves the current schedule out to your hard drive, changes and all.



The next feature allows you to manually edit the loaded schedule in case you want to make changes. If you right click on any event line in the schedule edit window you will see a small popup menu appear. This menu has two options, Insert Above Selected and Delete Selected. Obviously Delete Selected does exactly that, it deletes whatever line you have selected. Insert Above Selected though will bring up the Insert Sound menu (shown to the right). From here you can insert anything contained from within your Jockey Pro LT database as well as search the database for a particular file.



Well believe it or not, that is all there is to it!! As I stated earlier, the software is extremely easy to use and understand. Have fun voice tracking!!

NOTES: